

# TOWNSHIP OF VERONA



## 2026 COMMUNITY ENERGY PLAN

JULY 6, 2026

DRAFT PRESENTATION

# COMMUNITY ENERGY PLANNING:

---

- 1: Municipal team and relevant community stakeholders identify energy initiatives of interest to the municipality.
- 2: The team develops the Community Energy Plan (CEP), detailing:
  - Past energy accomplishments
  - Community energy usage data
  - Strategies and plans for future initiatives
- 3: Community Energy Plans typically include initiatives in:
  - Transportation
  - Renewable energy
  - Energy efficiency
  - Energy equity
- 4: Having a complete Community Energy Plan may open up additional funding options (e.g. NJBPU's CEP Implementation grant)
- 5: Clear, agreed upon set of energy initiatives to be implemented in the next 3-5 years

# DMR ARCHITECTS TEAM:

---



**David Troast, P.P., A.I.C.P., L.L.A**  
Lead Planner



**Michael Pikowski**  
Project Lead

# SUSTAINABLE JERSEY TEAM:



**Tracey Woods**  
Energy Program Director



**Poornima Gupta**  
Research & Project Specialist

# VERONA TEAM:

---



## **Verona Township Members:**

Kevin O'Sullivan – Township Manager  
Michael Kraus – Deputy Township Manager  
Kristine Gould – Executive Assistant

## **Sustainable Verona Members:**

Kerry Bass - Chair  
Jami Bjornstad - Public Member  
Christine Liaukus - Public Member  
Stephen Pope - Public Member  
Casey Sisco - Public Member  
Daniel Murray - Public Member  
Carol Thomas - Shade Tree Commission Member  
Jack McEvoy - Council Representative - Deputy Mayor

# THE PROCESS:



## The CEP Process

Consultation with SJ	Peer Events	Consultation with SJ	Finalize Plan	Adoption by resolution	Final Submission
<p><b>AUG-2025</b> Introduction to the program and planning process, sharing of community energy usage data, discussing available funding incentives for municipalities.</p>	<p><b>SEPT/OCT-2025</b></p> <ul style="list-style-type: none"><li>• Initiatives related to transportation</li><li>• Initiatives related to renewable energy</li><li>• Initiatives related to energy efficiency</li></ul>	<p><b>OCT-2025</b> Reviewing the workplan template and preparing the draft Community Energy plan (CEP). Discussing stakeholder consultation meeting.</p>	<p><b>JUN-2026</b> Incorporating the inputs from the stakeholder consultation and preparing the final CEP.</p>	<p><b>JULY-2026</b> Presenting the final CEP to the municipal governing body for approval and adoption by municipal resolution.</p>	<p><b>JULY-2026</b> Submission of the final CEP, municipal resolution for adopting the CEP and fund utilization report to the NJ-BPU.</p>

# CENSUS DATA:

## Population Characteristics for Verona, NJ

Population	Households	Median Household Income	Percent of Population in Poverty	NJ DCA MRI Score*	NJ DCA MRI Rank*
13,478	5,246	\$135,122	2.4%	15	476

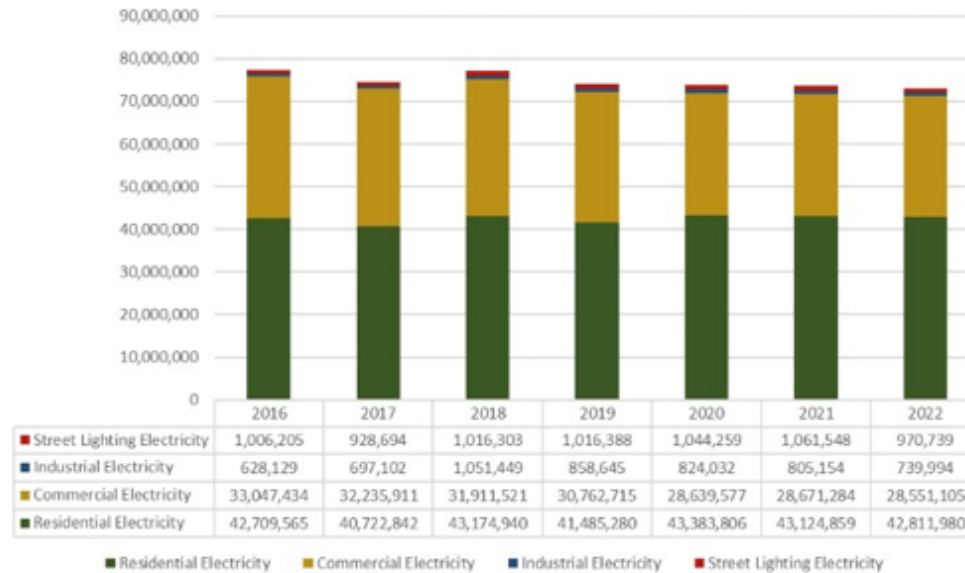
Table 1. 2020 Population Characteristics

Source: Sustainable Jersey. Community Profile Data by Municipality

\*MRI = Municipal Revitalization Index (MRI)

# TOTAL ENERGY PURCHASED BY MUNICIPALITY:

**Total Amount of Electricity Purchased by Municipality (kWh)**

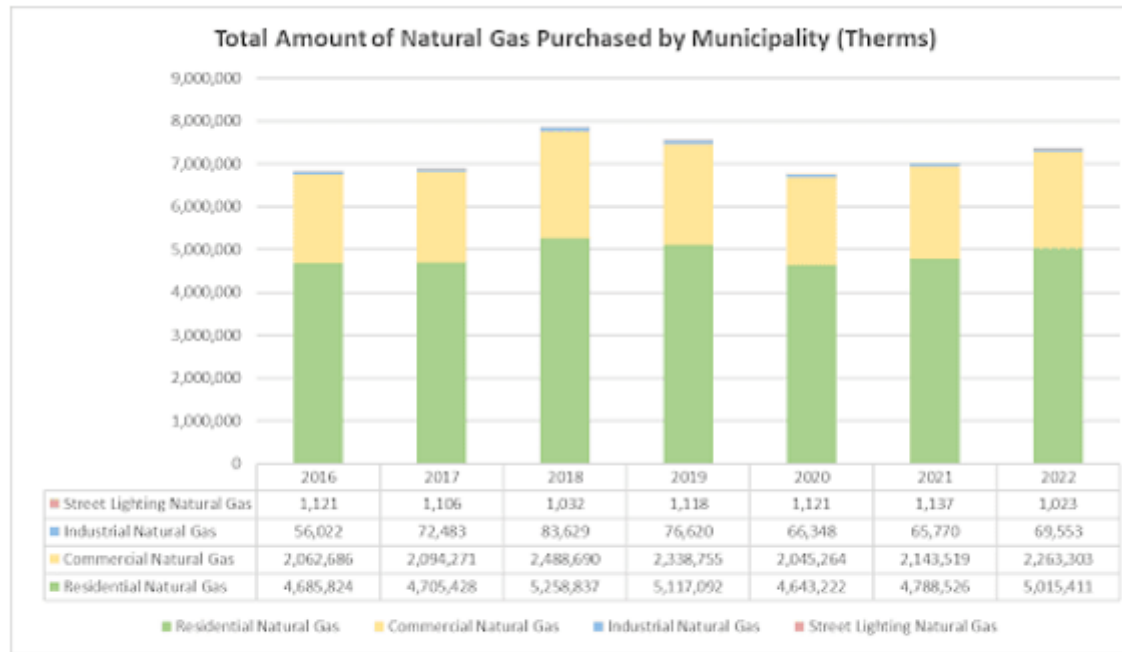


**Chart 1. Amount of Electricity Purchased by Sector (kWh)**

Source: Sustainable Jersey. Aggregated Community-Scale Utility Energy Data

Note: electricity values represent purchased electricity and do not include customer-generated electricity, such as from rooftop solar.

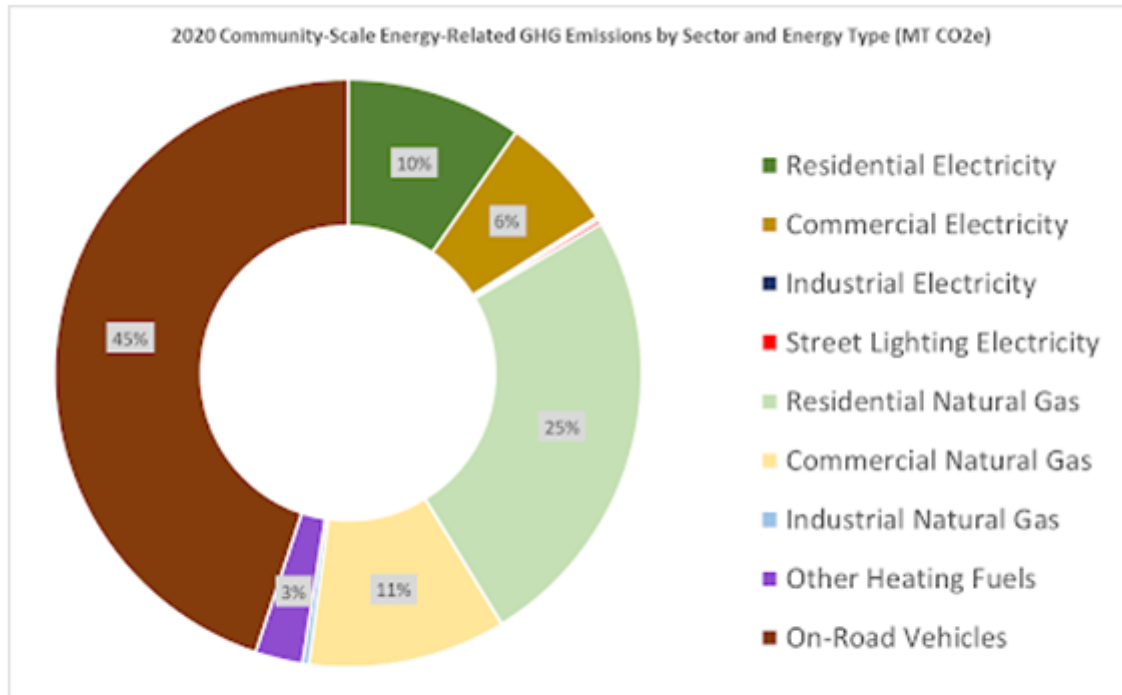
# TOTAL ENERGY PURCHASED BY MUNICIPALITY:



**Chart 2. Amount of Natural Gas Purchased by Sector (Therms)**

Source: Sustainable Jersey. Aggregated Community-Scale Utility Energy Data

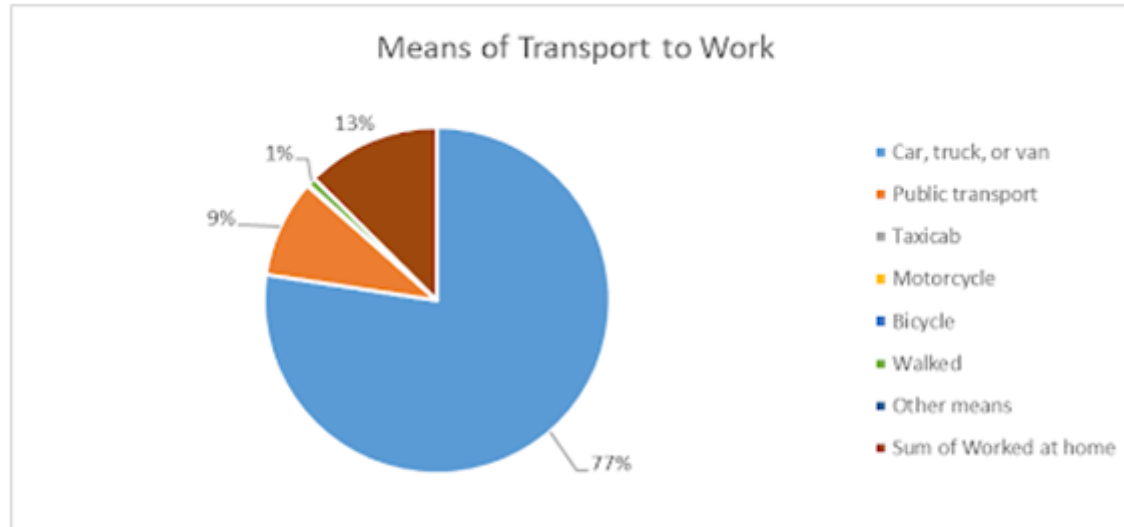
# COMMUNITY GHG EMISSIONS FROM ENERGY USE:



**Chart 3. Overall GHG Emissions of Verona by Subsector**

Source: Sustainable Jersey. Community-Scale Greenhouse Gas (GHG) Emissions Data

# TRANSPORTATION :

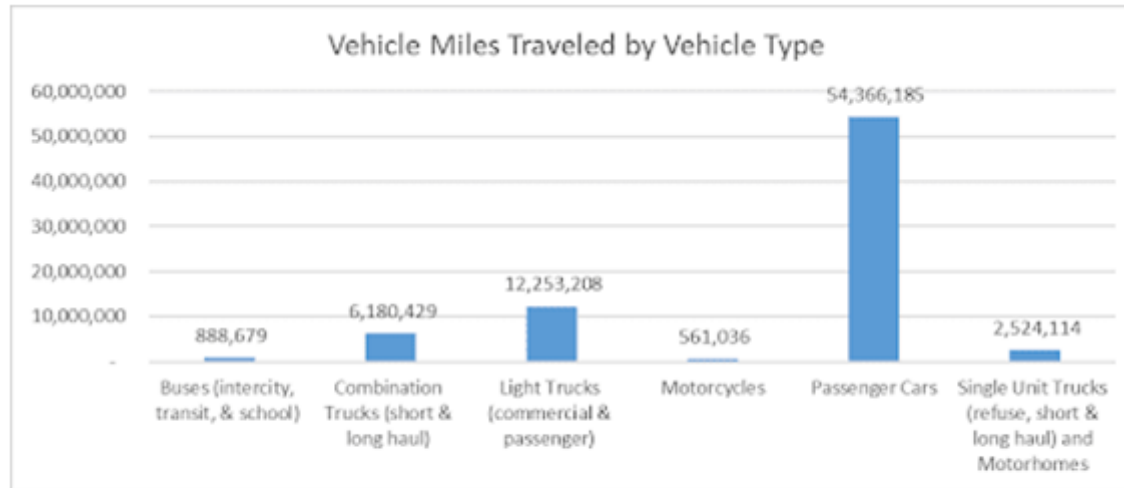


**Chart 4. Means of Transport to Work 2020**

Source: Sustainable Jersey. Community Profile Data by Municipality

Original Source: 2020 American Communities Survey

# TRANSPORTATION :



**Chart 5. Vehicle Miles Traveled for 2019**

Source: Sustainable Jersey. Vehicle Miles Travelled.

Original Source: NJTPA On-road VMT Data

# EXISTING ELECTRIC VEHICLE INFRASTRUCTURE :

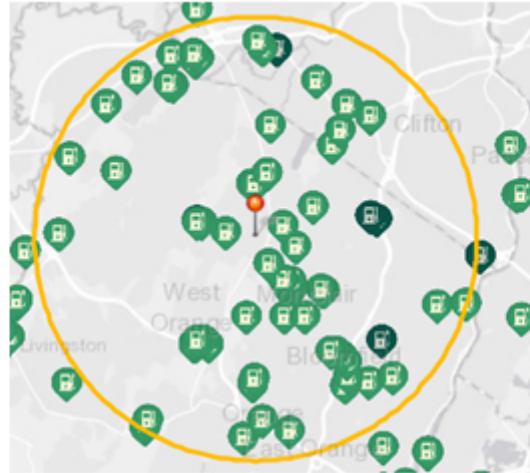
Estimated Number of Vehicles and Electric Vehicles			
Year Updated	Estimated Total Passenger Vehicles	# of EV's	% of Electric
2015	8811	5	0.06%
2020	9179	81	0.88%

**Table 2. Estimated Number of Vehicles and Electric Vehicles**

Source: Sustainable Jersey. Electric Vehicle Ownership Data

Original Source: NJTPA Alternative Fueled Vehicles Report

# PUBLIC EV CHARGING INFRASTRUCTURE :



Light green tags (not shown) – Level 1  
Medium green – Level 2  
Dark green – DCFC

## Map 1. Public EV Charging Infrastructure In Verona Township Area

Source: <https://njdep.maps.arcgis.com/apps/webappviewer/index.html?id=e41aa50dd8cd45faba8641b6be6097b1>

# SOLAR POTENTIAL BY PROPERTY :

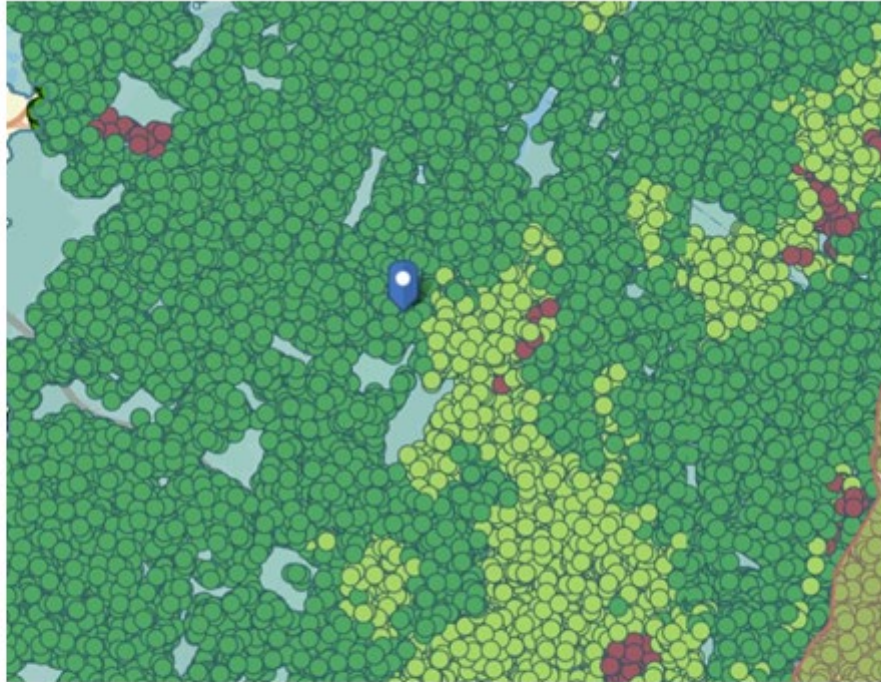


Darker shades indicate shady rooftop area and lighter shades indicate sunny rooftop area.

## **Map 2. Solar Potential by Property**

Source: Project Sunroof - Data Explorer | Verona Township

# SOLAR AVAILABLE CAPACITY :



The dots represent the estimated accommodation limit for that location:

 <100 kW AC;  100 to 1000 kW AC;  >1000 kW AC

### Map 3. Solar Available Capacity

Source: PSE&G. Available Capacity

# RESIDENTIAL ENERGY DATA :

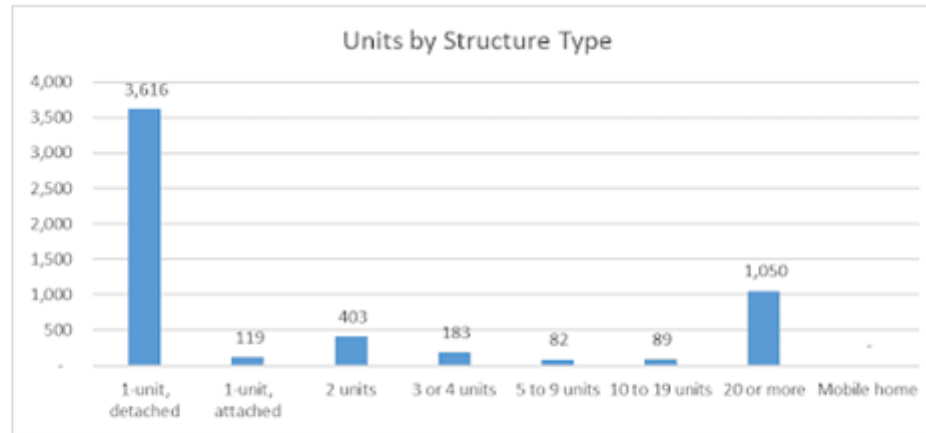
Household	Median Household Income	Percent of Population in Poverty	% Owner-occupied	% Renter-occupied
5,246	135,122	2%	82%	18%

**Table 3. Residential Housing Data**

Source: Sustainable Jersey. Community Profile Data

Original Data: US Census. 2020. American Community Survey

# HOUSING UNITS BY STRUCTURE TYPE :



**Chart 6. Housing Units by Structure Type**

Source: Sustainable Jersey. Community Profile Data

Original Data: US Census. 2020. American Community Survey

# LIFETIME PARTICIPATION IN RESIDENTIAL ENERGY EFFICIENCY INCENTIVE PROGRAMS :

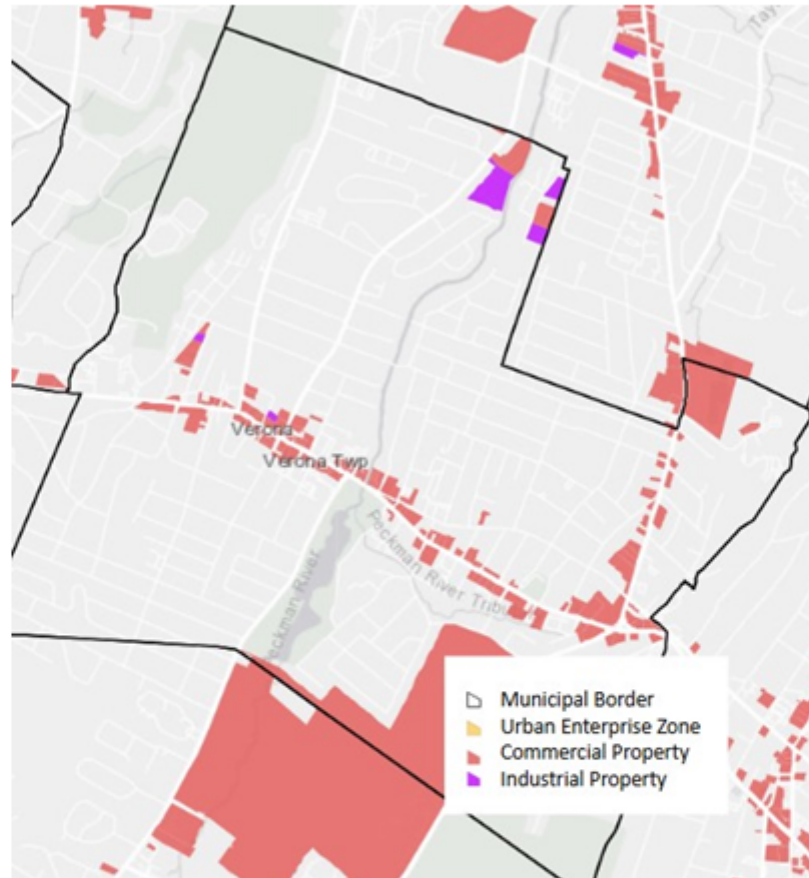
Date Updated	Units in Structures with 4 units or less	Total Completed Projects	Current Lifetime Rate %
Mar-21	4,227	200	5%

**Table 4. Lifetime Participation in Residential Energy Efficiency Incentive Programs**

Source: Sustainable Jersey. Energy Efficiency Program Participation (2008-2021) Lifetime Residential Participation Data

Original Source: New Jersey's Clean Energy Program DOE Refresh Data

# COMMERCIAL AND INDUSTRIAL PROPERTIES :



## Map 4. Commercial and Industrial Properties

Source: Sustainable Jersey. NJ Commercial and Industrial Properties Map

See map: <https://arcg.is/fXi9j>

Sustainable Jersey. CI Parcels 2020

[https://www.sustainablejersey.com/fileadmin/media/Actions\\_and\\_Certification/Actions/Energy/C I Parcels\\_2020.xlsx](https://www.sustainablejersey.com/fileadmin/media/Actions_and_Certification/Actions/Energy/C_I_Parcels_2020.xlsx)

# LIFETIME PARTICIPATION IN COMMERCIAL ENERGY EFFICIENCY INCENTIVE PROGRAMS :

Date Updated	C & I Taxed Parcels	Total Completed Projects	Current Lifetime Rate %
Mar-21	191	25	13%

**Table 5. Lifetime Participation in Commercial Energy Efficiency Incentive Programs**

Source: Sustainable Jersey. Lifetime Commercial Energy Efficiency Program Participation Rate (2021),  
Original Source: New Jersey's Clean Energy Program DOE Refresh Data

# WORKPLAN TEMPLATE:



## Workplan Template → CEP

CEPG Workplan Template

File Edit View Insert Format Data Tools Extensions Help

Google Sheet Workplan Template for Community Energy Planning

**1.1 Adopt Supportive Zoning and Regulations for EV Infrastructure**

Status in CEP: Initiative Summary: Pass NJDCA's Model Statewide Municipal EV Ordinance specifying electric vehicle charging stations (EVSE) as a permitted accessory use, establishing the permitting process for charging stations, and requiring Make-Ready and EVSE parking in new multifamily developments and parking lots. Modify the model ordinance standards for safety, signage, etc. as needed.

Current Status: Measures of Success: (modify to suit your community)  
 • "Reasonable Standards" language modified and finalized  
 • Ordinance passed  
 • Make-Ready and EV charging parking minimums posted on the municipal website

Resources:  
 • NJDCA's Model Statewide Ordinance  
 • US DOE's Blueprint 48: EV Charging Infrastructure for the Community  
 • Sustainable Jersey's Make-Ready Sign Electric Vehicle Friendly action

Potential Stakeholders:	Initiative lead:	Planned initiative start date:	Anticipated initiative length:	Priority:	Departments Involved:	Anticipated funding sources:	Obstacles/Barriers:	Next steps: (specific and tangible):
(modify to suit your community) • Downtown businesses/business	Enter name of point person				Enter text	Enter text	Enter text	Enter text

**Initiative 1.1: Adopt Supportive Zoning and Regulations for EV Infrastructure**

**DESCRIPTION:**  
 Pass NJDCA's Model Statewide Municipal EV Ordinance specifying electric vehicle charging stations as a permitted accessory use, establishing the permitting process for charging stations, and requiring Make-Ready and EVSE (Electric Vehicle Supply Equipment) parking in new multifamily developments and parking lots. Modify the model ordinance standards for safety, signage, etc. as needed.

**LEAD:** Environmental Commission  
**START DATE:** December 2023  
**PRIORITY:** Medium  
**ANTICIPATED LENGTH:** 6 months  
**FUNDING SOURCES:** N/A

**DEPARTMENTS INVOLVED:**  
 • Code Enforcement  
 • Municipal Attorney

**OBSTACLES/BARRIERS:**  
 • No significant barriers were identified

**COMMUNITY NOTES:**  
 The Model Statewide Municipal EV Ordinance went into effect in September 2021 as specified by state law, but the policies in the ordinance are not integrated into Gotham's municipal code. Code Enforcement currently requires applications for new developments to comply with the Model Ordinance.  
 As of 2019, 1% of passenger vehicles in Gotham were electric. As EV adoption accelerates, demand for charging infrastructure will also accelerate.

Year Updated	Estimated Total Passenger Vehicles	# of EVs	% Electric
2015	3,394	17	.5%
2019	3,519	35	1%

Table 3. Vehicles and Electric Vehicles in Gotham  
 Source: Sustainable Jersey, Community Profile Data by Municipality

**MEASURES OF SUCCESS:**  
 The goals for this initiative are new regulations regarding EVSE site design, such as accessibility and signage, and integration of the Model Statewide Municipal EV Ordinance into Gotham's land use code and permitting documents.

**NEXT STEPS:**  
 1. Elected representative directs municipal attorney to add Gotham-specific information to Model Statewide Municipal EV Ordinance and add the "Reasonable Standards" section to fit municipal needs.  
 2. Elected representative introduces ordinance to elected body for review and approval.  
 3. Township Administrator works with code official to post permitting application and inspection processes on the municipal website.

GOTHAM TOWNSHIP COMMUNITY ENERGY PLAN

# NJBPU INITIATIVE SELECTION:

---

## **Strategy 1: Reduce Energy Consumption and Emissions from the Transportation Sector**

- 1.2 Train First Responders on EVs and EVSE
- 1.4 Purchase Alternative Fuel Vehicles
- 1.5 Improve Municipal Fleet Efficiency
- 1.6 Install Public EV Charging Infrastructure

## **Strategy 2: Accelerate Deployment of Renewable Energy and Distributed Energy Resources**

- 2.3 Train First Responders on Solar
- 2.9 Implement Renewable Government Energy Aggregation (R-GEA)
- 2.11 Support Community Solar as Outreach Coordinator

## **Strategy 3: Maximize Energy Efficiency and Conservation and Reduce Peak Demand**

- 3.1 Upgrade Energy Efficiency for Municipal Facilities
- 3.2 Residential Energy Efficiency Outreach Campaign
- 3.3 Commercial Energy Efficiency Outreach Campaign

## **Strategy 4: Reduce Energy Consumption and Emissions from the Building Sector**

- 4.3 Encourage Benchmarking and Commissioning for Existing Buildings

## **Strategy 6: Support Community Energy Planning and Action with an Emphasis on Encouraging and Supporting Participation by Low- and Moderate-Income and Environmental Justice Communities**

- 6.5 Conduct Energy Efficiency Outreach to Community-Serving Institutions

## **Strategy 7: Expand the Clean Energy Innovation Economy**

- 7.1 Adopt Energy Storage Policies

# TRAIN FIRST RESPONDERS ON EVS AND EVSE 1.2:

## Initiative 1.2: Train First Responders on EVs and EVSE

**Description:** To further public confidence and maintain emergency preparedness, require training on electric vehicles and associated infrastructure for local first responders.

<b>Lead</b>	<b>Start Date</b>	<b>Priority</b>	<b>Anticipated Length</b>	<b>Funding Sources</b>
<i>Chiefs of VPD, VFD and Rescue squad</i>	<i>Fall 2026</i>	<i>Medium</i>	<i>1 day event recurring every 36 months.</i>	<i>Municipal funds seeking sponsorships and grants</i>

# PURCHASE ALTERNATIVE FUEL VEHICLES 1.4:

## Initiative 1.4 Purchase Alternative Fuel Vehicles

**Description:** Replace existing municipal fleet vehicles with plug-in hybrid, battery electric, or other sustainable alternative fuel vehicles (AFV), informed by fleet analysis.

Lead	Start Date	Priority	Anticipated Length	Funding Sources
<i>Administration</i>	<i>Winter 2025-26</i>	<i>High</i>	<i>Ongoing</i>	<i>2025 Budget and NJ BPU Clean fleet incentive</i>

# IMPROVE MUNICIPAL FLEET EFFICIENCY 1.5:

## Initiative 1.5 Improve Municipal Fleet Efficiency

**Description:** Implement strategies such as interdepartmental coordination to right-size the municipal fleet (vehicle replacement or retirement), and optimize fuel use with improved route planning, driver efficiency, and reduced idling to reduce operational costs and GHG emissions from municipal fleets – public works, police, fire, etc.

Lead	Start Date	Priority	Anticipated Length	Funding Sources
<i>Administration &amp; DPW</i>	<i>2026</i>	<i>Medium</i>	<i>Ongoing</i>	<i>General and capital fund while seeking grants and other funding sources</i>

# INSTALL PUBLIC EV CHARGING INFRASTRUCTURE 1.6:

## Initiative 1.6: Install Public EV Charging Infrastructure

**Description:** Install electric vehicle charging infrastructure, including chargers, signage, and safety and accessibility features, for public use.

Lead	Start Date	Priority	Anticipated Length	Funding Sources
<i>Administration</i>	2026	<i>Medium</i>	<i>ongoing</i>	<i>PSE&amp;G, BPU, State &amp; Federal incentives/grants, local municipal funds</i>

# TRAIN FIRST RESPONDERS ON SOLAR 2.3:

## Initiative 2.3 Train First Responders on Solar

**Description:** To further public confidence and maintain emergency preparedness, require training on solar for first local responders.

Lead	Start Date	Priority	Anticipated Length	Funding Sources
<i>OEM Coordinator</i>	<i>2027</i>	<i>Medium</i>	<i>1 day every 36 months</i>	<i>Municipal funds seeking sponsorships and grants</i>

# IMPLEMENT RENEWABLE GOV'T ENERGY AGGREGATION 2.9:

## Initiative 2.9 Implement Renewable Government Energy Aggregation (R-GEA)

**Description:** Establish a Renewable Government Energy Aggregation (R-GEA) program. R-GEA is a third-party electric supply contract negotiated by a municipality (or group of municipalities) on behalf of its residents. Utilizing their population size, municipalities can negotiate for a supply that is more sustainable, often less expensive than can typically be achieved by individual residents.

Lead	Start Date	Priority	Anticipated Length	Funding Sources
<i>Administration</i>	<i>2025</i>	<i>Medium</i>	<i>Ongoing</i>	<i>Not Applicable</i>

# SUPPORT COMMUNITY SOLAR AS OUTREACH COORDINATOR 2.11:

## Initiative 2.11 Support Community Solar as an Outreach Coordinator

**Description:** Use municipal resources and networks (mailing lists, websites, etc.) to educate the community about community solar in general and the details of local projects (e.g., subscription rates and requirements).

Lead	Start Date	Priority	Anticipated Length	Funding Sources
<i>Sustainable Verona</i>	Spring 2026	Medium	2026-2027	<i>Sustainable Verona budget</i>

# UPGRADE ENERGY EFFICIENCY FOR MUNICIPAL FACILITIES 3.1:

## Initiative 3.1 Upgrade Energy Efficiency for Municipal Facilities

**Description:** Upgrade municipal facilities to be more energy efficient. New Jersey's Clean Energy Program and the electric and natural gas utilities offer incentive programs that guide municipalities through the upgrade process, starting with walk-through audits to establish the most effective measures to reduce energy use. Following implementation, showcase upgrades in energy efficiency outreach to local commercial entities.

Lead	Start Date	Priority	Anticipated Length	Funding Sources
<i>Administration</i>	<i>2026</i>	<i>High</i>	<i>36 months; ongoing</i>	<i>Energy savings will offset all capital project costs</i>

# RESIDENTIAL ENERGY EFFICIENCY OUTREACH CAMPAIGN 3.2:

## Initiative 3.2 Residential Energy Efficiency Outreach Campaign

**Description:** Implement an outreach effort to help residents take advantage of energy efficiency incentive programs offered by New Jersey’s electric and natural gas utilities, including Home Performance with ENERGY STAR and Comfort Partners.

Lead	Start Date	Priority	Anticipated Length	Funding Sources
<i>Sustainable Verona</i>	<i>Spring 2025</i>	<i>High</i>	<i>2 years</i>	<i>Sustainable Jersey Residential Energy Efficiency Program Grant</i>

# COMMERCIAL ENERGY EFFICIENCY OUTREACH CAMPAIGN 3.3:

## Initiative 3.3 Commercial Energy Efficiency Outreach Campaign

**Description:** Implement an outreach effort to help local businesses take advantage of energy efficiency incentive programs offered by New Jersey's electric and natural gas utilities.

Lead	Start Date	Priority	Anticipated Length	Funding Sources
Sustainable Verona	2025	Medium-Low	2 years	Municipal funds; seeking grants

# ENCOURAGE BENCHMARKING AND COMMISSIONING FOR EXISTING BUILDINGS 4.3:

## Initiative 4.3 Encourage Benchmarking and Commissioning for Existing Buildings

**Description:** Educate local building managers about benchmarking (comparing energy use to similar facilities) and commissioning (optimizing energy equipment to reduce energy use). Inform building managers of utility building management programs that include benchmarking and/or commissioning.

Lead	Start Date	Priority	Anticipated Length	Funding Sources
<i>Administration</i>	<i>2026</i>	<i>Low</i>	<i>Ongoing</i>	<i>Local funds</i>

The Township has an EPA Energy Star Portfolio Manager account for municipal buildings. Sustainable Verona has begun outreach efforts to existing commercial properties.

# CONDUCT ENERGY EFFICIENCY OUTREACH TO COMMUNITY-SERVING INSTITUTIONS 6.5:

## Initiative 6.5 Conduct Energy Efficiency Outreach to Community-Serving Institutions

**Description:** Reach out to limited-capacity entities that serve low- and moderate-income communities to encourage participation in state and utility energy efficiency programs. Outreach strategies include messaging indirect benefits of energy efficiency to organizational mission and segmenting outreach to various types of organizations with different needs.

Lead	Start Date	Priority	Anticipated Length	Funding Sources
<i>Sustainable Verona</i>	<i>Spring 2026</i>	<i>High</i>	<i>1-3 months</i>	<i>SJ / PSEG Commercial Energy Efficiency grant</i>

# ADOPT ENERGY STORAGE POLICIES 7.1:

## Initiative 7.1 Adopt Energy Storage Policies

**Description:** Adopt standards and establish requirements for permitting battery energy storage systems. Post information about energy storage regulations to the municipal website and ensure appropriate municipal staff are informed.

Lead	Start Date	Priority	Anticipated Length	Funding Sources
<i>Zoning Officer &amp; Construction Official</i>	<i>2027</i>	<i>Lower</i>	<i>12 months</i>	<i>N/A</i>



# Questions