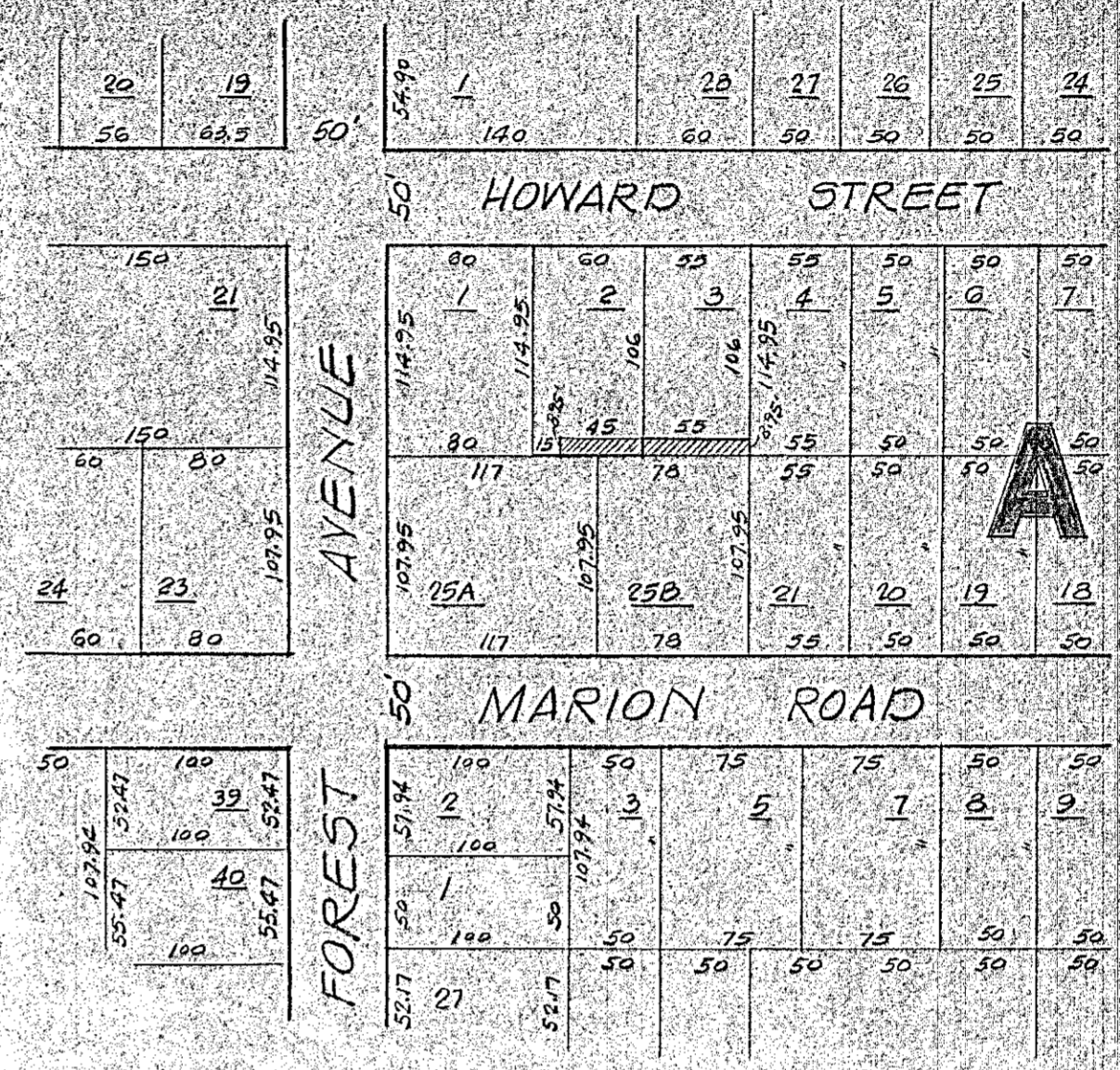
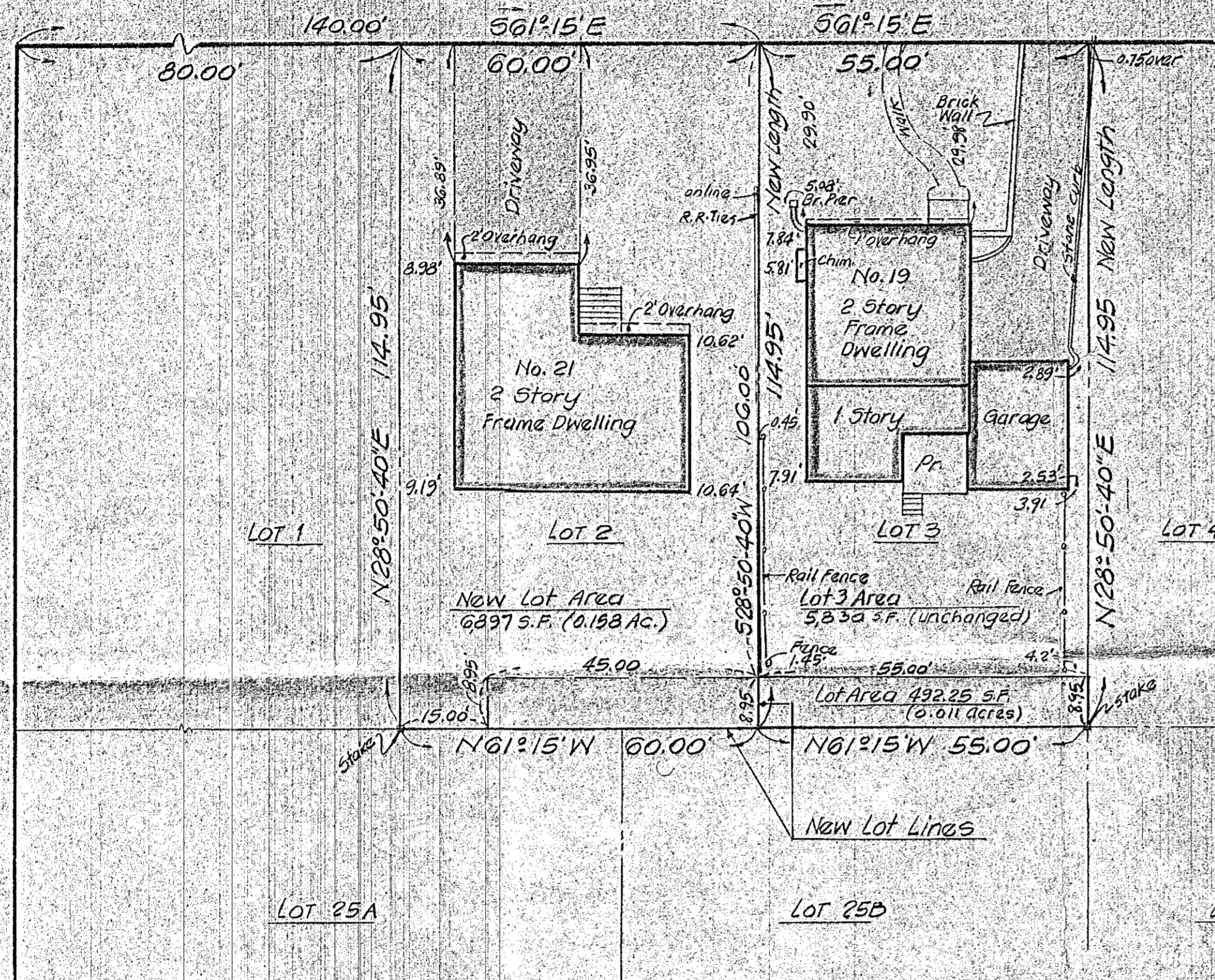


HOWARD STREET
(50' Wide)

FOREST AVENUE
(50' Wide)



KEY MAP scale 1"=50'
TAX MAP SHEET 38
BLOCK A
REAR OF LOTS 2 & 3

APPROVED AS A MINOR SUBDIVISION, JANUARY 6, 1983

OWNER & APPLICANT

• Frattan Realty Co., Inc.

Henry M. Carlson
Henry M. Carlson, Chairman, Verona Planning Board
John Zingali
John Zingali, Acting Secretary

NO.	REVISION	BY	DATE	SCALE:	DATE OF ISSUE:
1	Resubdivide Lot 3	RLB	12/27/82	1"=20 FT	30 NOV 1982
				DRAWN BY:	SURVEY DATE:
				RLB	30 NOV 1982
				CHECKED BY:	APPROVED BY:

MINOR SUBDIVISION OF
REAR OF LOTS 2 & 3 IN
BLOCK A, TOWNSHIP OF
VERONA, ESSEX CO., N.J.

DRAWING TITLE:
MINOR SUBDIVISION

Robert L. Bowser
ROBERT L. BOWSER N.J.L.S. NO. 16968
ROBERT T. VOSS N.J.L.S. NO. 22709

B&A
BOWSER ENGINEERS & ASSOCIATES, INC.
CONSULTING ENGINEERS SURVEYORS PLANNERS
586 Central Avenue, East Orange, New Jersey 07018

DRAWING NO.
13724/A-2
PROJECT NO.
115-81 (MS)