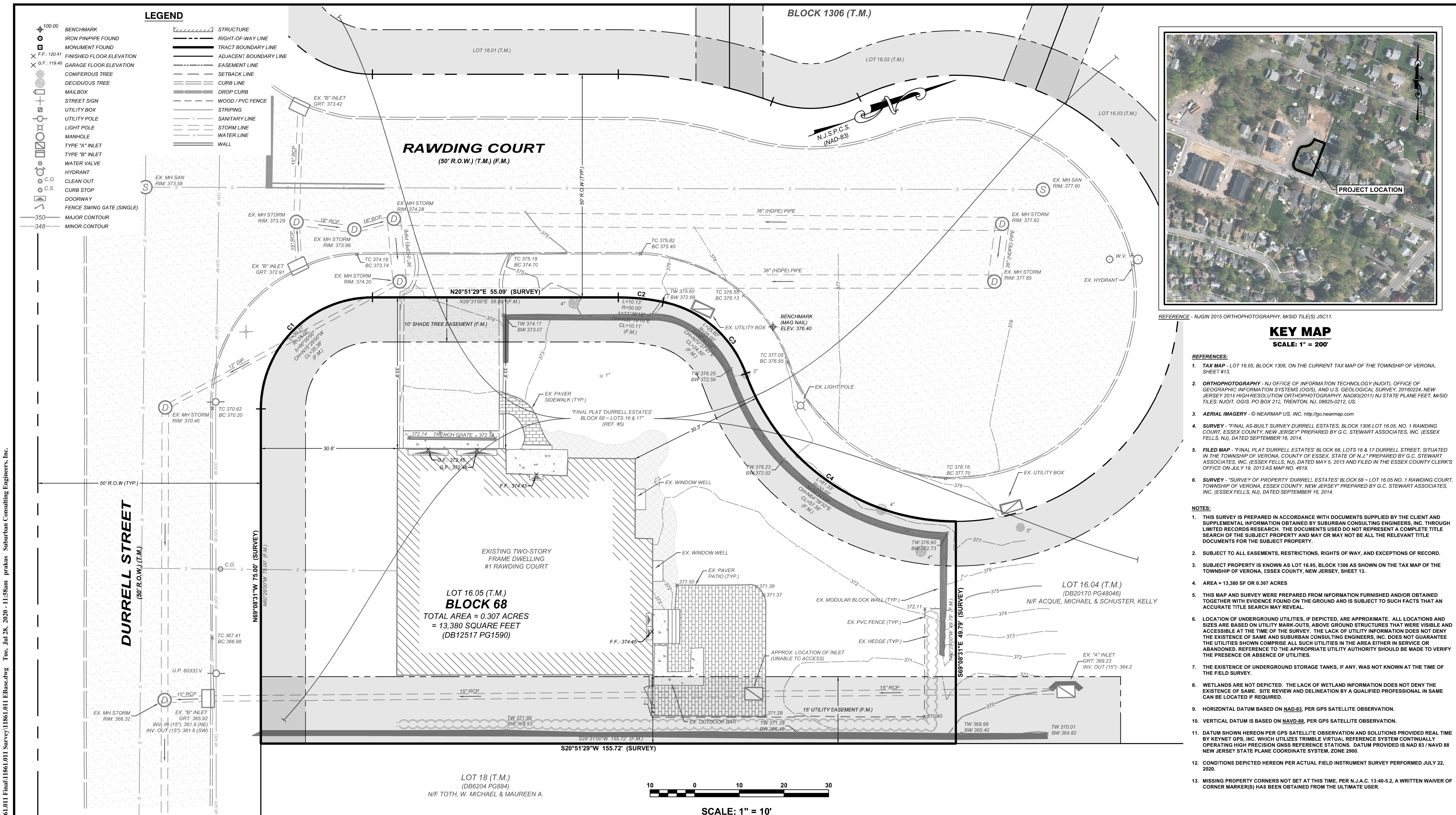


LEGEND

- 100.00 BENCHMARK
- IRON PIPE FOUND
- MONUMENT FOUND
- F.F.: 120.41 FINISHED FLOOR ELEVATION
- G.F.: 119.40 GARAGE FLOOR ELEVATION
- CONIFEROUS TREE
- DECIDUOUS TREE
- MAILBOX
- STREET SIGN
- UTILITY BOX
- UTILITY POLE
- LIGHT POLE
- MANHOLE
- TYPE "A" INLET
- TYPE "B" INLET
- WATER VALVE
- HYDRANT
- CLEAN OUT
- CURB STOP
- DOORWAY
- FENCE SWING GATE (SINGLE)
- 350 MAJOR CONTOUR
- 348 MINOR CONTOUR

- STRUCTURE
- RIGHT-OF-WAY LINE
- TRACT BOUNDARY LINE
- ADJACENT BOUNDARY LINE
- EASEMENT LINE
- SETBACK LINE
- CURB LINE
- DROP CURB
- WOOD / PVC FENCE
- STRIPING
- SANITARY LINE
- STORM LINE
- WATER LINE
- WALL

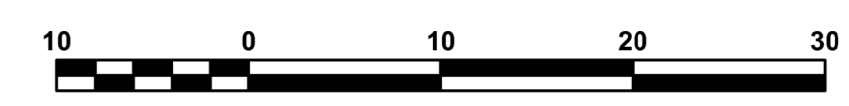


REFERENCE - NJGN 2015 ORTHOPHOTOGRAPHY, M-SID TILE(S) J5C11.

KEY MAP
SCALE: 1" = 200'

- REFERENCES:**
- TAX MAP - LOT 16.05, BLOCK 1306, ON THE CURRENT TAX MAP OF THE TOWNSHIP OF VERONA, SHEET #13.
 - ORTHOGRAPHY - NJ OFFICE OF INFORMATION TECHNOLOGY (NJGIT), OFFICE OF GEOGRAPHIC INFORMATION SYSTEMS (OGIS), AND U.S. GEOLOGICAL SURVEY, 20160224, NEW JERSEY 2015 HIGH RESOLUTION ORTHOPHOTOGRAPHY, NAD83(2011) NJ STATE PLANE FEET, M-SID TILES: NJGIT, OGIS, PO BOX 212, TRENTON, NJ, 08625-0212, US.
 - AERIAL IMAGERY - © NEARMAP US, INC. <http://go.nearmap.com>
 - SURVEY - "FINAL AS-BUILT SURVEY DURRELL ESTATES, BLOCK 1306 LOT 16.05, NO. 1 RAWDING COURT, ESSEX COUNTY, NEW JERSEY" PREPARED BY G.C. STEWART ASSOCIATES, INC. (ESSEX FELLS, NJ), DATED SEPTEMBER 16, 2014.
 - FILED MAP - "FINAL PLAT DURRELL ESTATES' BLOCK 68, LOTS 16 & 17 DURRELL STREET, SITUATED IN THE TOWNSHIP OF VERONA, COUNTY OF ESSEX, STATE OF N.J." PREPARED BY G.C. STEWART ASSOCIATES, INC. (ESSEX FELLS, NJ), DATED MAY 5, 2013 AND FILED IN THE ESSEX COUNTY CLERK'S OFFICE ON JULY 19, 2013 AS MAP NO. 4619.
 - SURVEY - "SURVEY OF PROPERTY DURRELL ESTATES' BLOCK 68 - LOT 16.05 NO. 1 RAWDING COURT, TOWNSHIP OF VERONA, ESSEX COUNTY, NEW JERSEY" PREPARED BY G.C. STEWART ASSOCIATES, INC. (ESSEX FELLS, NJ), DATED SEPTEMBER 16, 2014.

- NOTES:**
- THIS SURVEY IS PREPARED IN ACCORDANCE WITH DOCUMENTS SUPPLIED BY THE CLIENT AND SUPPLEMENTAL INFORMATION OBTAINED BY SUBURBAN CONSULTING ENGINEERS, INC. THROUGH LIMITED RECORDS RESEARCH. THE DOCUMENTS USED DO NOT REPRESENT A COMPLETE TITLE SEARCH OF THE SUBJECT PROPERTY AND MAY OR MAY NOT BE ALL THE RELEVANT TITLE DOCUMENTS FOR THE SUBJECT PROPERTY.
 - SUBJECT TO ALL EASEMENTS, RESTRICTIONS, RIGHTS OF WAY, AND EXCEPTIONS OF RECORD.
 - SUBJECT PROPERTY IS KNOWN AS LOT 16.05, BLOCK 1306 AS SHOWN ON THE TAX MAP OF THE TOWNSHIP OF VERONA, ESSEX COUNTY, NEW JERSEY, SHEET 13.
 - AREA = 13,380 SF OR 0.307 ACRES
 - THIS MAP AND SURVEY WERE PREPARED FROM INFORMATION FURNISHED AND/OR OBTAINED TOGETHER WITH EVIDENCE FOUND ON THE GROUND AND IS SUBJECT TO SUCH FACTS THAT AN ACCURATE TITLE SEARCH MAY REVEAL.
 - LOCATION OF UNDERGROUND UTILITIES, IF DEPICTED, ARE APPROXIMATE. ALL LOCATIONS AND SIZES ARE BASED ON UTILITY MARK-OUTS. ABOVE GROUND STRUCTURES THAT WERE VISIBLE AND ACCESSIBLE AT THE TIME OF THE SURVEY. THE LACK OF UTILITY INFORMATION DOES NOT DENY THE EXISTENCE OF SAME AND SUBURBAN CONSULTING ENGINEERS, INC. DOES NOT GUARANTEE THE UTILITIES SHOWN COMPRISE ALL SUCH UTILITIES IN THE AREA EITHER IN SERVICE OR ABANDONED. REFERENCE TO THE APPROPRIATE UTILITY AUTHORITY SHOULD BE MADE TO VERIFY THE PRESENCE OR ABSENCE OF UTILITIES.
 - THE EXISTENCE OF UNDERGROUND STORAGE TANKS, IF ANY, WAS NOT KNOWN AT THE TIME OF THE FIELD SURVEY.
 - WETLANDS ARE NOT DEPICTED. THE LACK OF WETLAND INFORMATION DOES NOT DENY THE EXISTENCE OF SAME. SITE REVIEW AND DELINEATION BY A QUALIFIED PROFESSIONAL IN SAME CAN BE LOCATED IF REQUIRED.
 - HORIZONTAL DATUM BASED ON NAD-83, PER GPS SATELLITE OBSERVATION.
 - DATUM DATUM IS BASED ON NAVD-88, PER GPS SATELLITE OBSERVATION.
 - VERTICAL SHOWN HEREON PER GPS SATELLITE OBSERVATION AND SOLUTIONS PROVIDED REAL TIME BY KEYNET GPS, INC. WHICH UTILIZES TRIMBLE VIRTUAL REFERENCE SYSTEM CONTINUALLY OPERATING HIGH PRECISION GNSS REFERENCE STATIONS. DATUM PROVIDED IS NAD 83 / NAVD 88 NEW JERSEY STATE PLANE COORDINATE SYSTEM, ZONE 2900.
 - CONDITIONS DEPICTED HEREON PER ACTUAL FIELD INSTRUMENT SURVEY PERFORMED JULY 22, 2020.
 - MISSING PROPERTY CORNERS NOT SET AT THIS TIME, PER N.J.A.C. 13:40-5.2, A WRITTEN WAIVER OF CORNER MARKER(S) HAS BEEN OBTAINED FROM THE ULTIMATE USER.



SCALE: 1" = 10'

CURVE DATA TABLE				
CURVE #	RADIUS	DELTA	CHORD BEARING	ARC LENGTH
C1	25.00'	90°00'00"	N24°08'31"W	35.36'
C2	50.00'	11°36'19"	N26°39'39"E	10.11'
C3	25.00'	58°40'44"	N61°48'10"E	24.50'
C4	50.00'	70°17'03"	N56°00'01"E	57.56'

NOTICE
THIS DRAWING AND ALL INFORMATION CONTAINED HEREIN IS AUTHORIZED FOR USE ONLY BY THE PARTY FOR WHOM THE WORK WAS CONTRACTED OR TO WHOM IT IS CERTIFIED. THIS DRAWING MAY NOT BE COPIED, REUSED, DISCLOSED, DISTRIBUTED, OR RELIED UPON FOR ANY OTHER PURPOSE WITHOUT THE WRITTEN CONSENT OF SUBURBAN CONSULTING ENGINEERS, INC.
PER N.J.A.C. ELECTRONIC SUBMISSIONS NOT CONTAINING A VALID DIGITAL SEAL OR PAPER COPIES NOT CONTAINING A RAISED SEAL ARE NOT ORIGINALS AND MAY HAVE BEEN ALTERED.
© COPYRIGHT 2020 SUBURBAN CONSULTING ENGINEERS, INC.™
ALL RIGHTS RESERVED

DESCRIPTION	NO.	DATE	BY	CHK.
REVISIONS				

DRAWN BY:	07/28/2020
CHECKED BY:	
DRAWN BY:	07/28/2020
CHECKED BY:	
DRAWN BY:	07/28/2020

JOSEPH D. PHIL, PLS
NJ PROFESSIONAL LAND SURVEYOR
LICENSE NO. 24GS04336300

DATE: 07/28/2020

SC E SUBURBAN CONSULTING ENGINEERS, INC.
COA NO.: 24G128037500
21N110004290

- Civil Engineers - Municipal Engineers -
- Landscape Architects -
- Planners - Environmentalists - Land Surveyors -

96 US Highway 206, Suite 101 2430 Highway 34, Bldg. A, Suite 1R
Flanders, N.J. 07836 - 973.398.1776 Wall, N.J. 08736 - 732.282.1776

EXCELLENCE ♦ ECONOMY ♦ ENVIRONMENT

**1 RAWDING COURT
BLOCK 68, LOT 16.05
TOWNSHIP OF VERONA
ESSEX COUNTY, NEW JERSEY**

PROJECT NUMBER:
SCE-11861.011

SCALE:
AS NOTED

BOUNDARY & TOPOGRAPHIC SURVEY

SHEET 1 OF 1

REVISION

Z:\SCE\Verona\11861\011 Final\11861.011 EBase.dwg Tue, Jul 28, 2020 - 11:58am prakus Suburban Consulting Engineers, Inc.